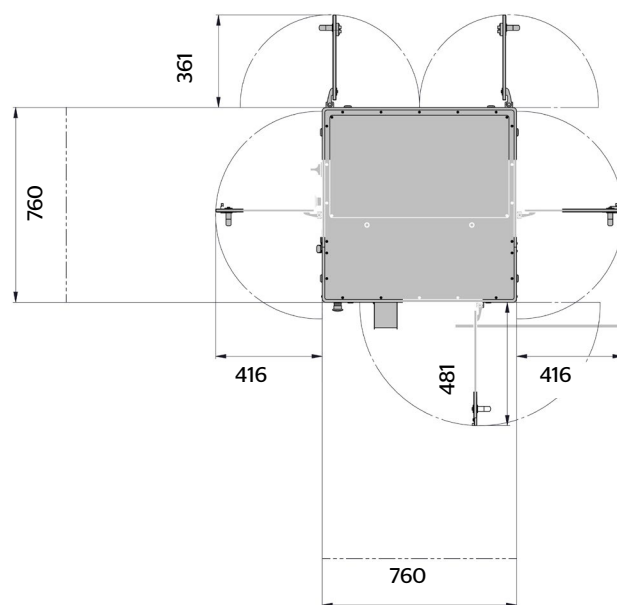
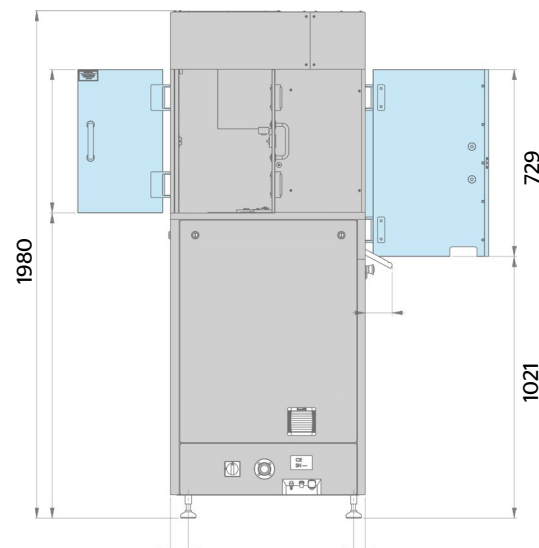


STYL'One Evo

TECHNICAL DATA

Number of press stations	1
Tool type	B+D (EU/TSM), D-441, oversized, core rods *
Die	BBS, BB, B, D, oversized *
Max. tablet diameter (mm)	21 (B) – 25 (D) – 40 (oversized) *
Max. output	1 750 tabs/hour (single layer)
Feed shoes (up to 3, 5 possible *)	Hand feed, gravity, paddle force feeder, core feeding
Tablet layers	Up to 5 layers or 4 layers + core
Max. die filling	21 mm (B) – 23 mm (D) 40 mm (oversized) *
Compression mode	Force or displacement driven
Compression zone	Adjustable 1 to 12 mm insertion depth
Max. pre-compression force	50 kN standard *
Max. compression force	50 kN standard *
Punch movement	Selectable 1 punch only or upper and lower
Dwell time	<2 ms can be extended up to 3 s
R&D accessories	Instrumented die, heated die, enhanced operator safety, full containment, multi-check connection, automated studies and more
Production accessories	GMP Package, weight regulation, tablet sorting, external lubrication and more
Power	2 kW max during operation
Power supply/utilities	400/ 480 V (± 10%) – 50/60 Hz
Net Weight	1090 kg (2 403 lbs)

* other characteristics on demand, please contact us



Dimension in mm

ME-040_EN_E (12 2019)



MEDELPHARM
the tableting instrument company

MEDELPHARM SAS
12, rue des Petites Combes, Z.I.
01700 Beynost (Lyon) – France
Phone: +33 478 976 210
contact@medelpharm.com
www.medelpharm.com



STYL'One
channel